

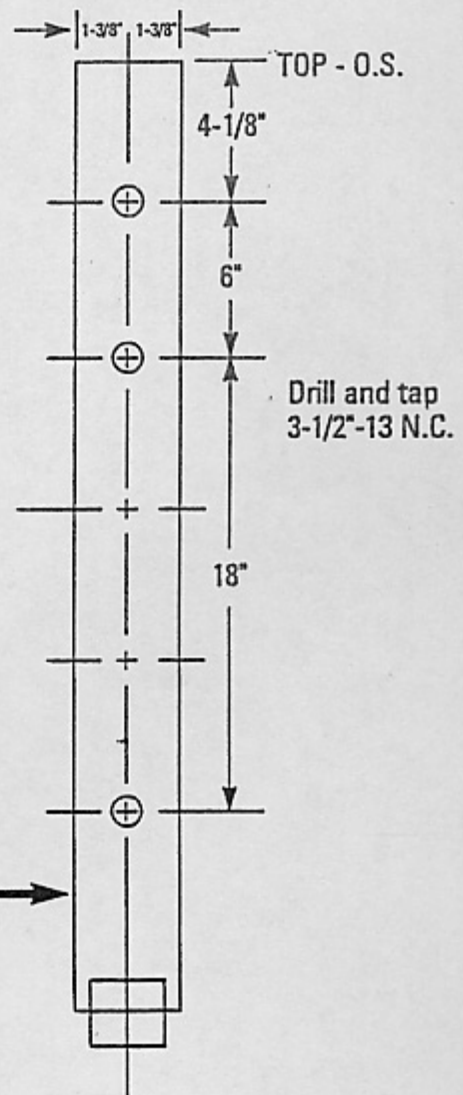
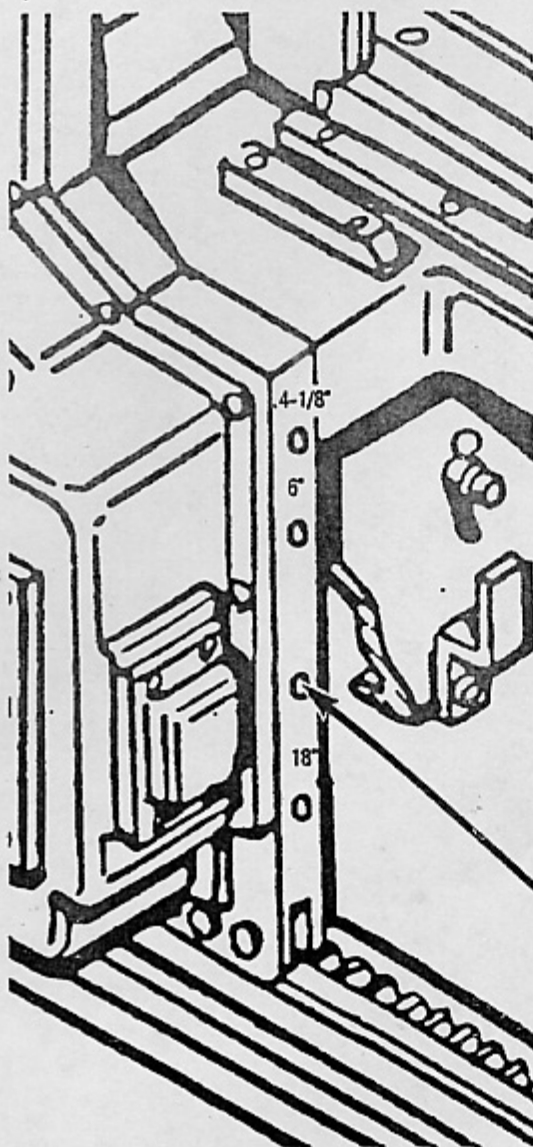
FEED END FRAME LOCK

{ Installation instructions }

{ fits: } **HOOPER**
HOOPER-SWIFT
KOPPERS
LANGSTON
S&S
WARD

Feed End Frame Lock { Installation instructions }

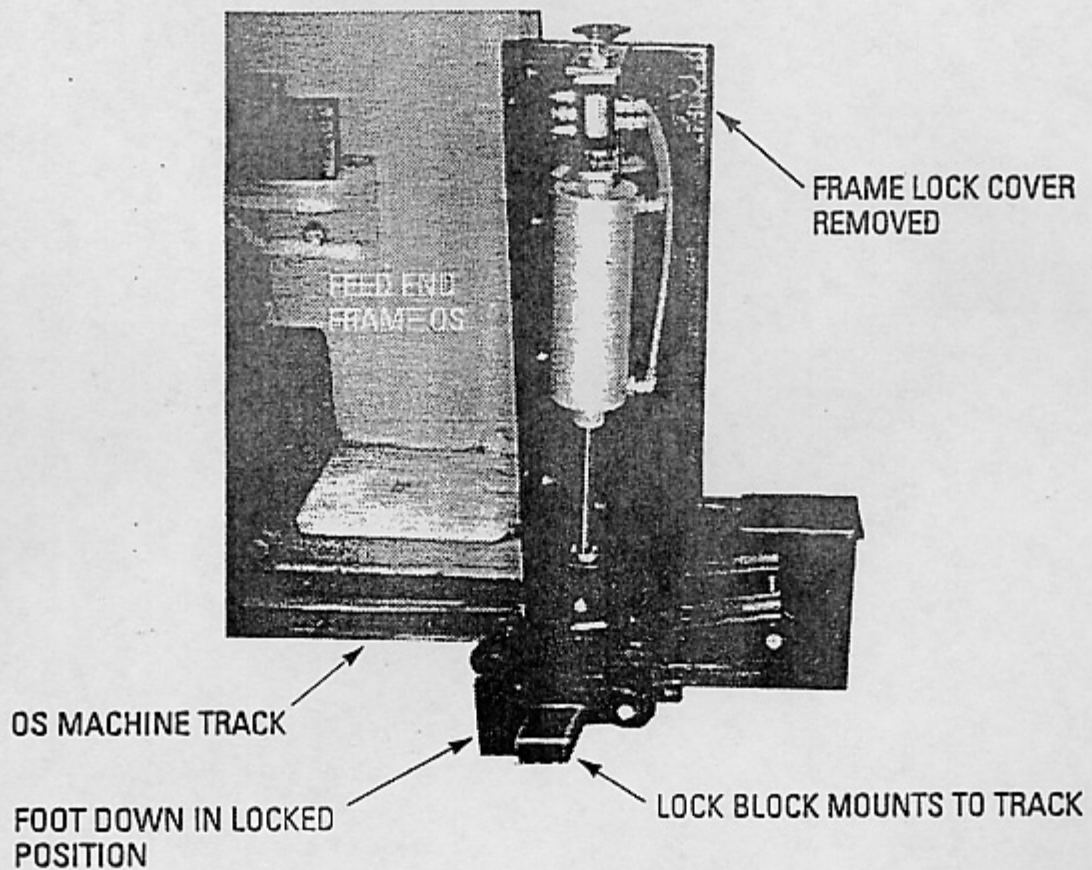
- {1} Remove safety cover.
- {2} Locate, drill and tap three 1/2"-13 holes in rear operator side frame per drawing.



D.WG #1
N.T.S.

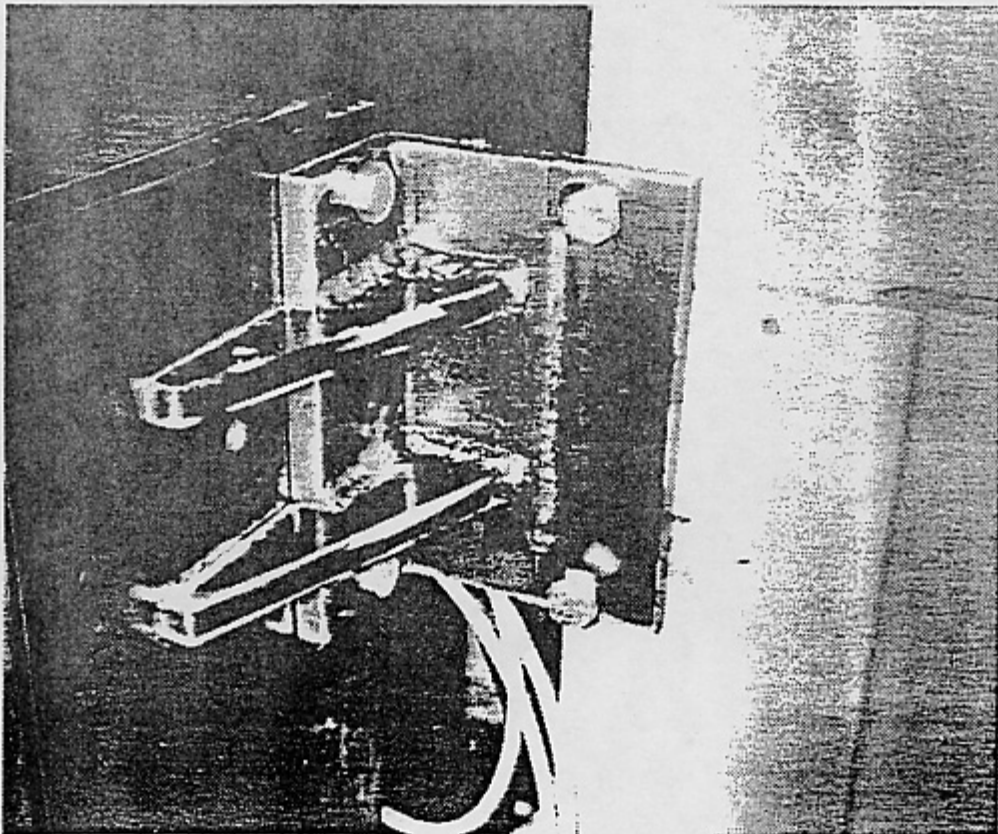
Feed End Frame Lock { Installation instructions }

- {3} Remove front bolt, rear operators side track roller assembly. Obtain replacement bolt 1/2" longer. Place Feed End Frame Lock in position (see drawing) and using hole provided bolt in place through track roller assembly. Position Feed End Frame Lock parallel to machine frame and tighten bolt.



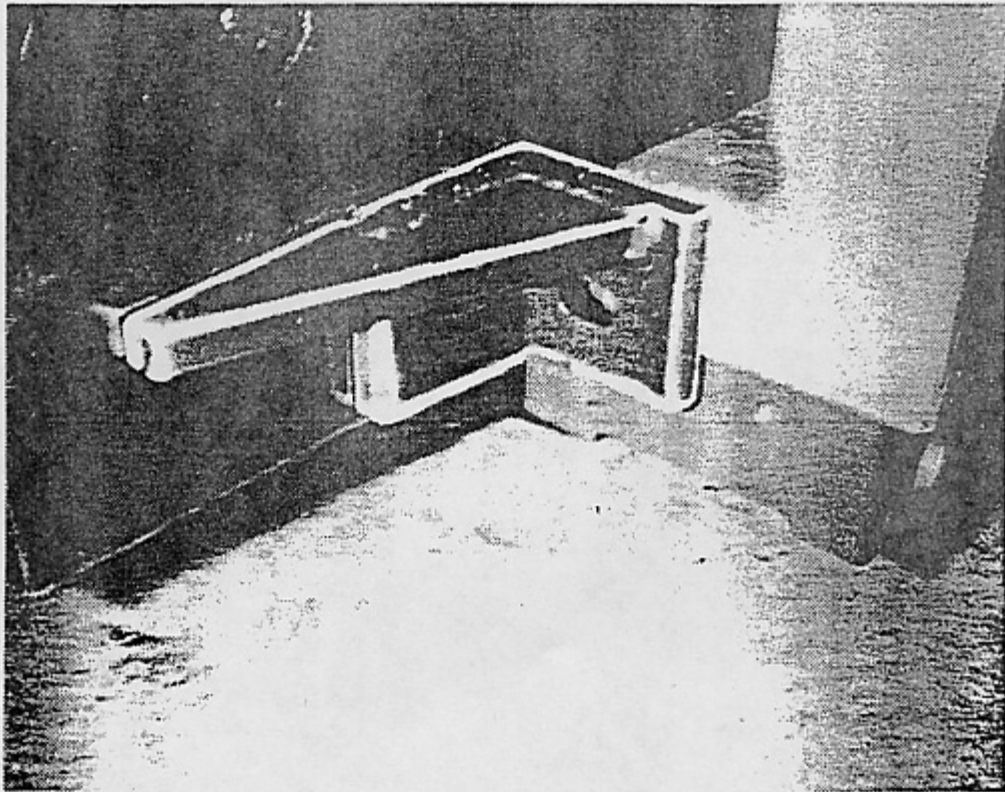
Feed End Frame Lock { Installation instructions }

- {4} Check position of Feed End Frame Lock. Bolt upper (large) bracket to Feed End Frame Lock. Mark machine frame for bolt location. Drill and tap for 2 each 1/2"-13 bolts. Install bolts and tighten. (see drawing)



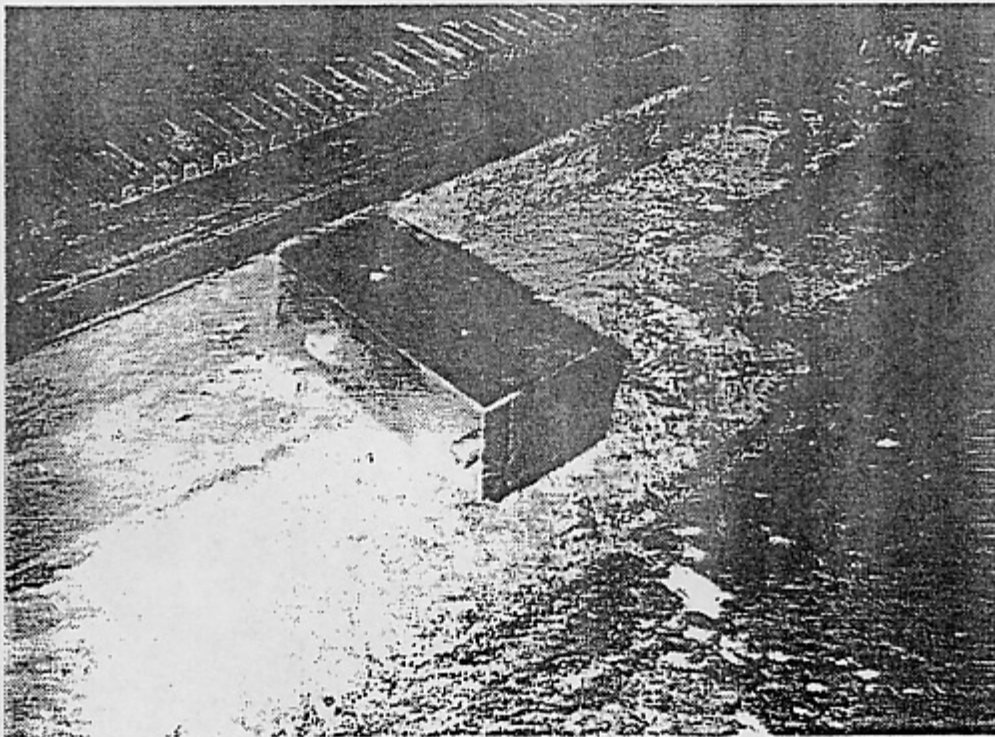
Feed End Frame Lock { Installation instructions }

- {5} Hold lower (small) bracket in position and mark machine frame for bolt location. Drill and tap for one 1/2"-13 bolt. Install bracket and bolt to machine frame. (see drawing)



Feed End Frame Lock { Installation instructions }

- {6} Close machine and place striker mounting bar on track with locking arm centered between screws. Weld to track. (see drawing)



Feed End Frame Lock { Installation instructions }

- {7} Shim between striker plate and mounting bar if necessary to ensure proper closure of machine.
- {8} Replace safety cover.
- {9} Plumb to plant air supply.

