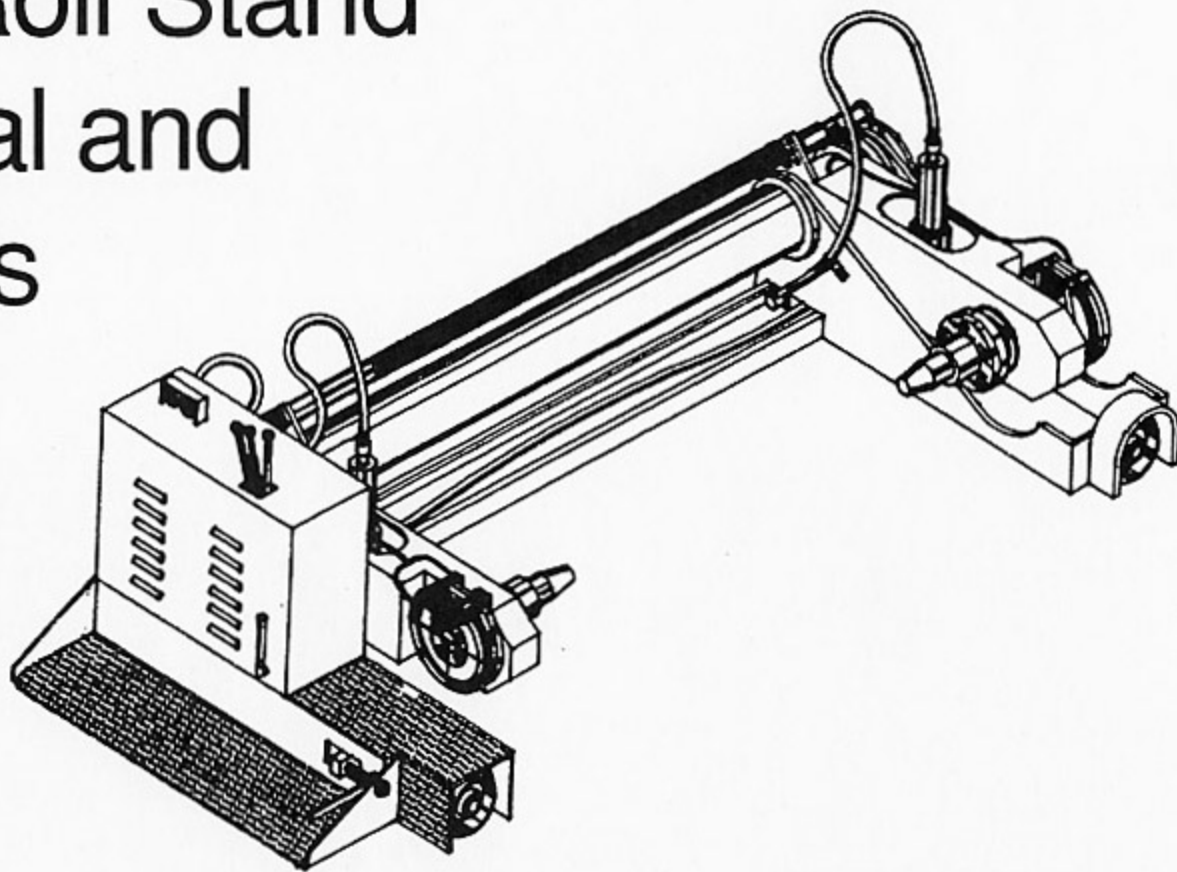


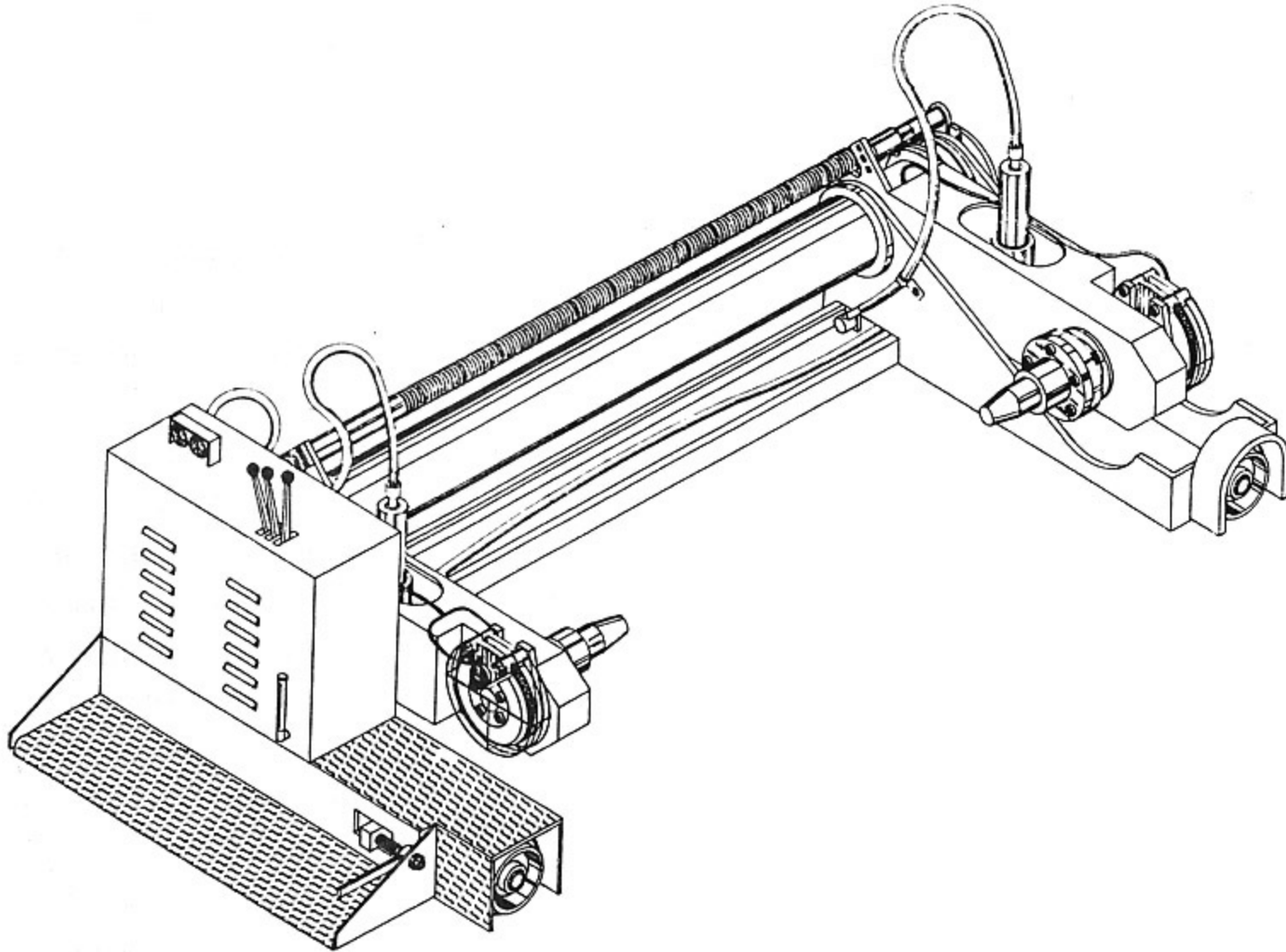
“ T H E Q U A L I T Y A L T E R N A T I V E ”

Corrugated Gear and Services Inc. Martin Mill Roll Stand Parts Manual and Modifications



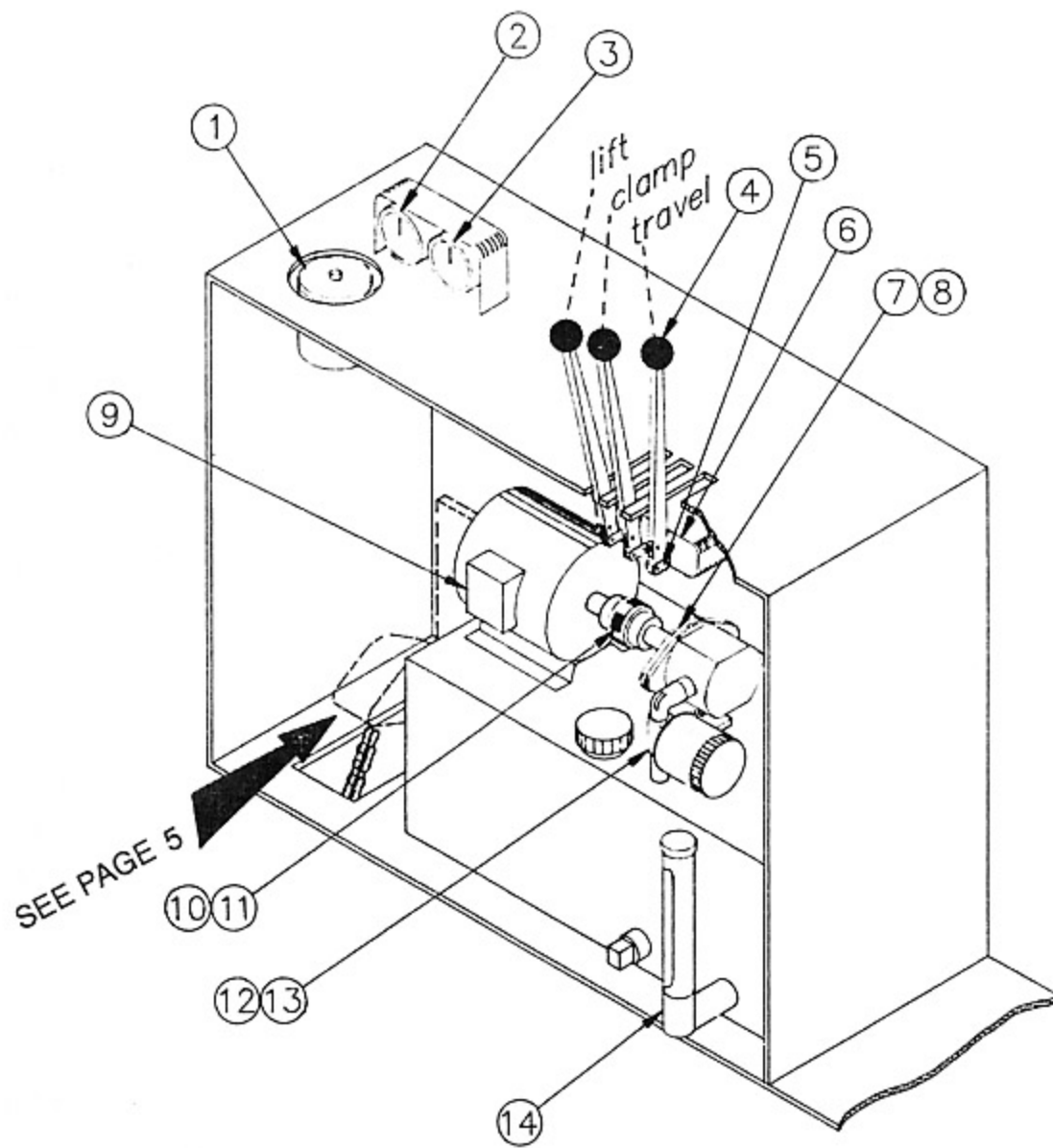
Index

Page	Description
1	Roll Stand Pictorial
2-3	Inside Cabinet
4-5	Drive Wheel Assembly
6-7	Rear Wheel Assembly
8-9	Main Shaft Assembly
10-11	Screw Shaft Assembly
12-13	Arm Assembly
14-15	Lift Cylinder Assembly
16-17	Web Tension Control Box
18-19	Lubrication Points
20-21	Standard Drum Brake Assembly
22-23	Air Brakes (Tidland)
24-25	Guard for Air Brakes
26-27	Optional 78" to 87" Extension Conversion



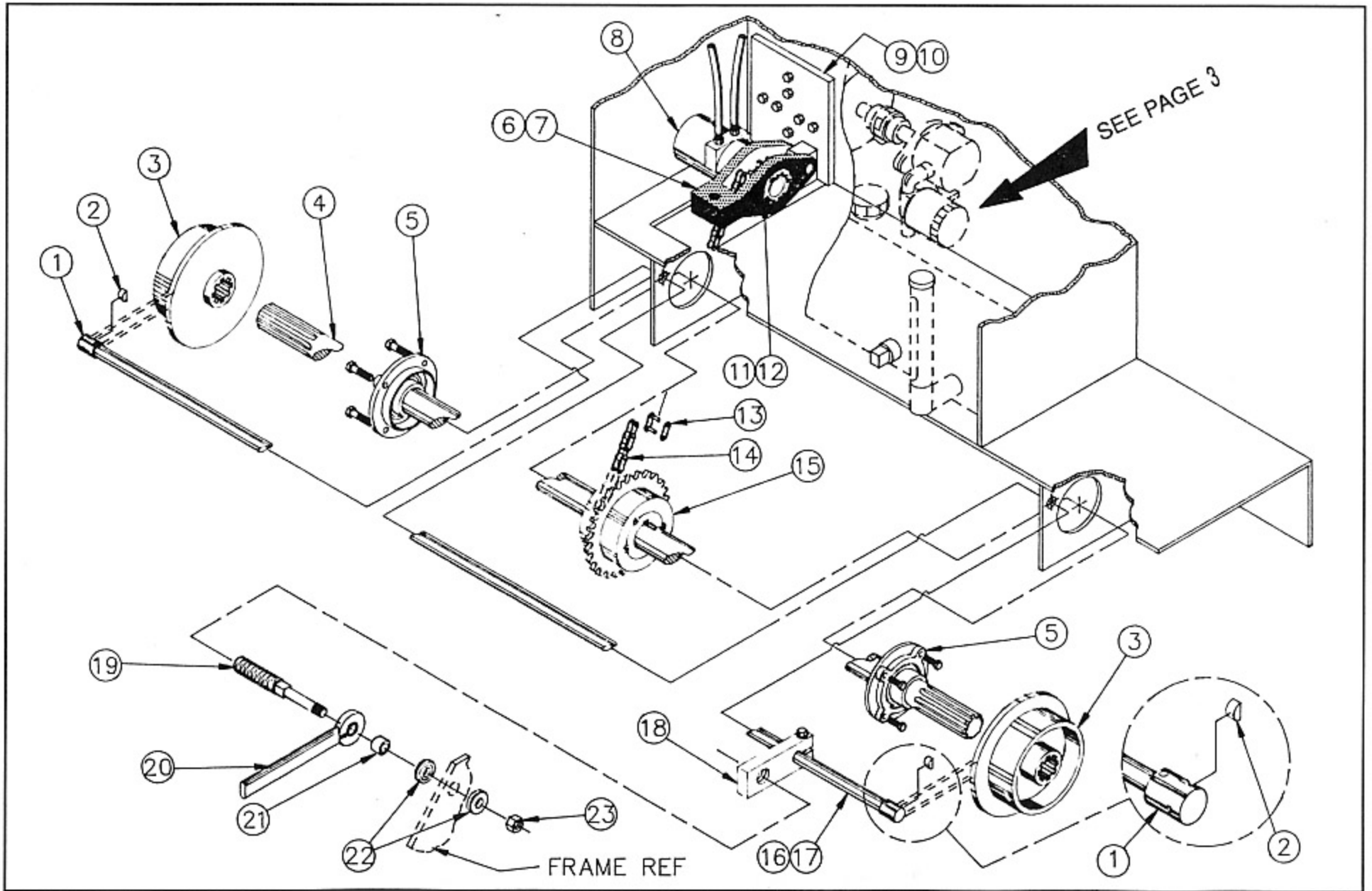
Mill Roll Stand - Inside Cabinet

Item #	Part # and Description	Quantity
1	CGS-9229 Master Cylinder	1
2	CGS-9823 Pressure Gauge	2
3	CGS-9823A Air Pressure Gauge	1
4	CGS-9633 Handle	3
5	1020-90063-0 Master Link	3
6	CGS-9825 Three Way Valve Assembly	1
7	CGS-8493 Pump Mount	1
8	CGS-9826 Hydraulic Pump	1
9	CGS-9827 Electric Motor	1
10	1034-00049-0 Complete Coupling with Spider	1
11	1034-00048-0 Spider Insert	1
12	CGS-9828 Filter Base Assembly	1
13	CGS-9829 Hydraulic Filter	1
14	CGS-7910 Sight Gauge	1



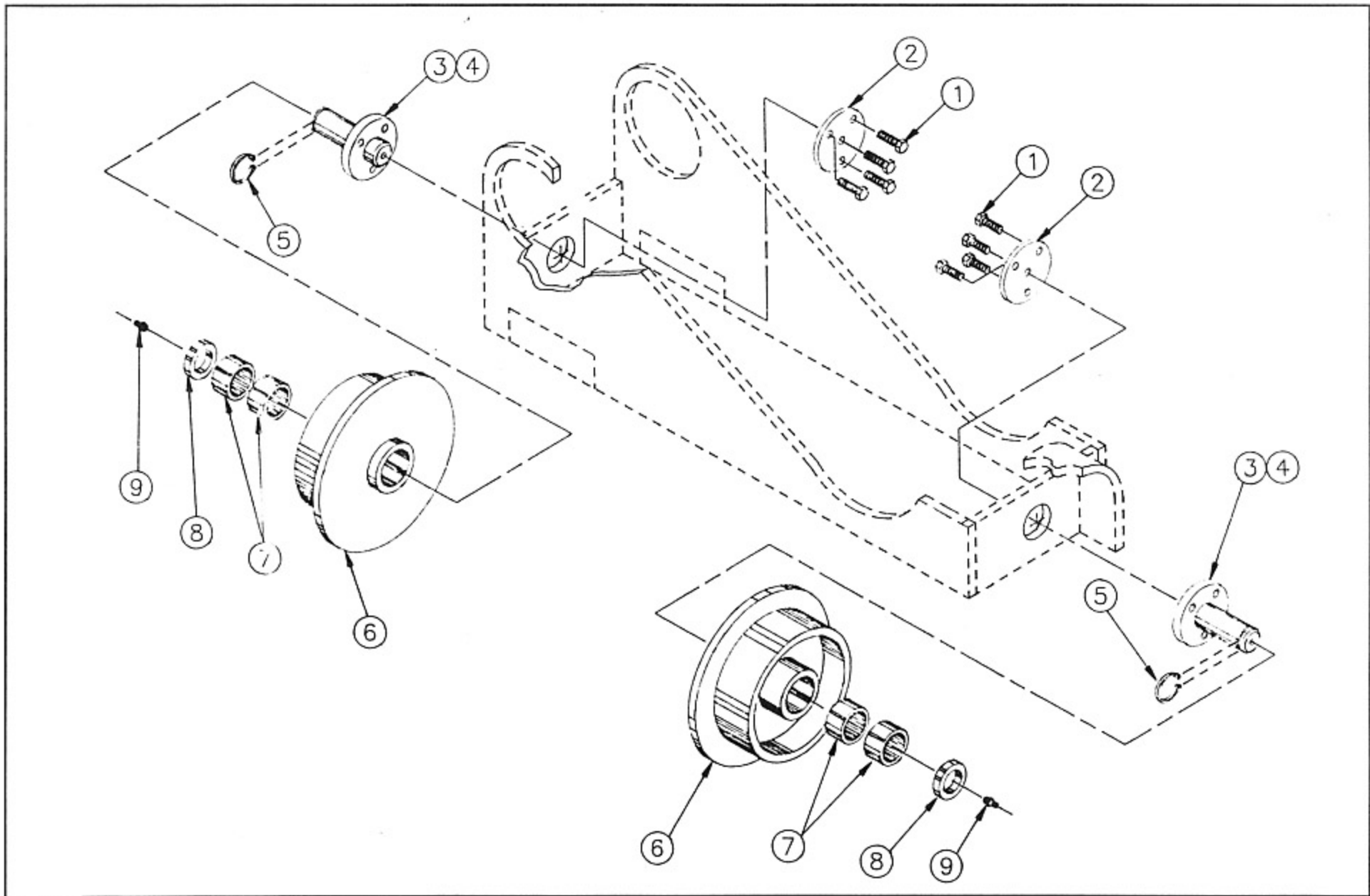
Mill Roll Stand - Drive Wheel Assembly

Item #	Part # and Description	Quantity	
1	CGS-8179 Wheel Guide	2	
2	CGS-9194 Felt Insert	2	
3	CGS-8171 Front Wheel-Splined	2	
4	CGS-8172 Splined Drive Axle	1	
5	1013-32724-0 Axle Bearing	2	
6	CGS-8475 Drive Sprocket	1	
7	CGS-8478 Motor Mount	1	
8	CGS-9815 Hydraulic Motor	1	
9	CGS-8500R Back Plate - R.H. Machine	1	(Shown)
10	CGS-8500L Back Plate - L.H. Machine	1	
11	1000-20928-0 Bearing	2	
12	1236-33400-0 Retaining Ring	2	
13	1020-90060-0 Master Link	1	
14	1020-00611-0 Chain	1	
15	CGS-9816 Sprocket with Taper Hub	1	
16	CGS-8174 Lateral Adj. Shaft Assembly	1	(Includes Item 1 & 2)
17	CGS-8178 Shaft Only	1	
18	CGS-9817 Lateral Adj. Nut	1	
19	CGS-9600 Lateral Adj. Screw	1	
20	CGS-9818 Ratchet Handle	1	
21	CGS-9819 Spacer	1	
22	1004-65000-0 Thrust Bearing	2	
23	1/2-20 Hexnut	1	



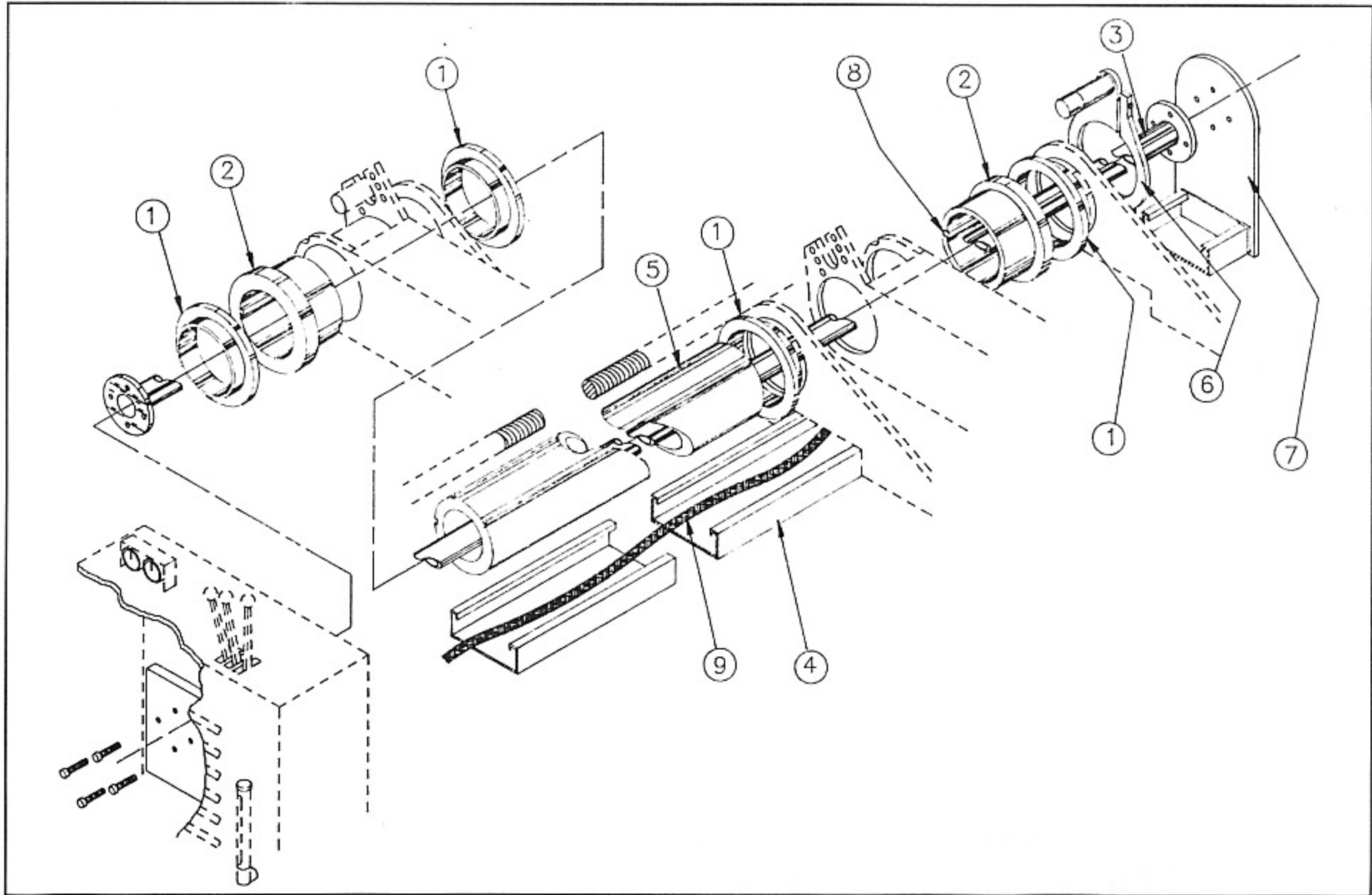
Mill Roll Stand - Rear Wheel Assembly

Item #	Part # and Description	Quantity
1	3/8-16 x 2" Bolt	8
2	CGS-8050 Inside End Cap	2
3	CGS-8032 Assembly Stud Assembly (Made of Item # 1, 2, 4, 5 & 9)	2
4	CGS-8032 Stud	2
5	1237-20000-0 Retaining Ring	2
6	CGS-8030 Rear Wheel	2
7	1006-13220-0 Needle Bearing	4
	CGS-9822 Bronze Bushing	4
8	CGS-8049 Wheel Spacer	2
9	1/8 NPT Grease Fitting	2



Mill Roll Stand - Shaft Assembly

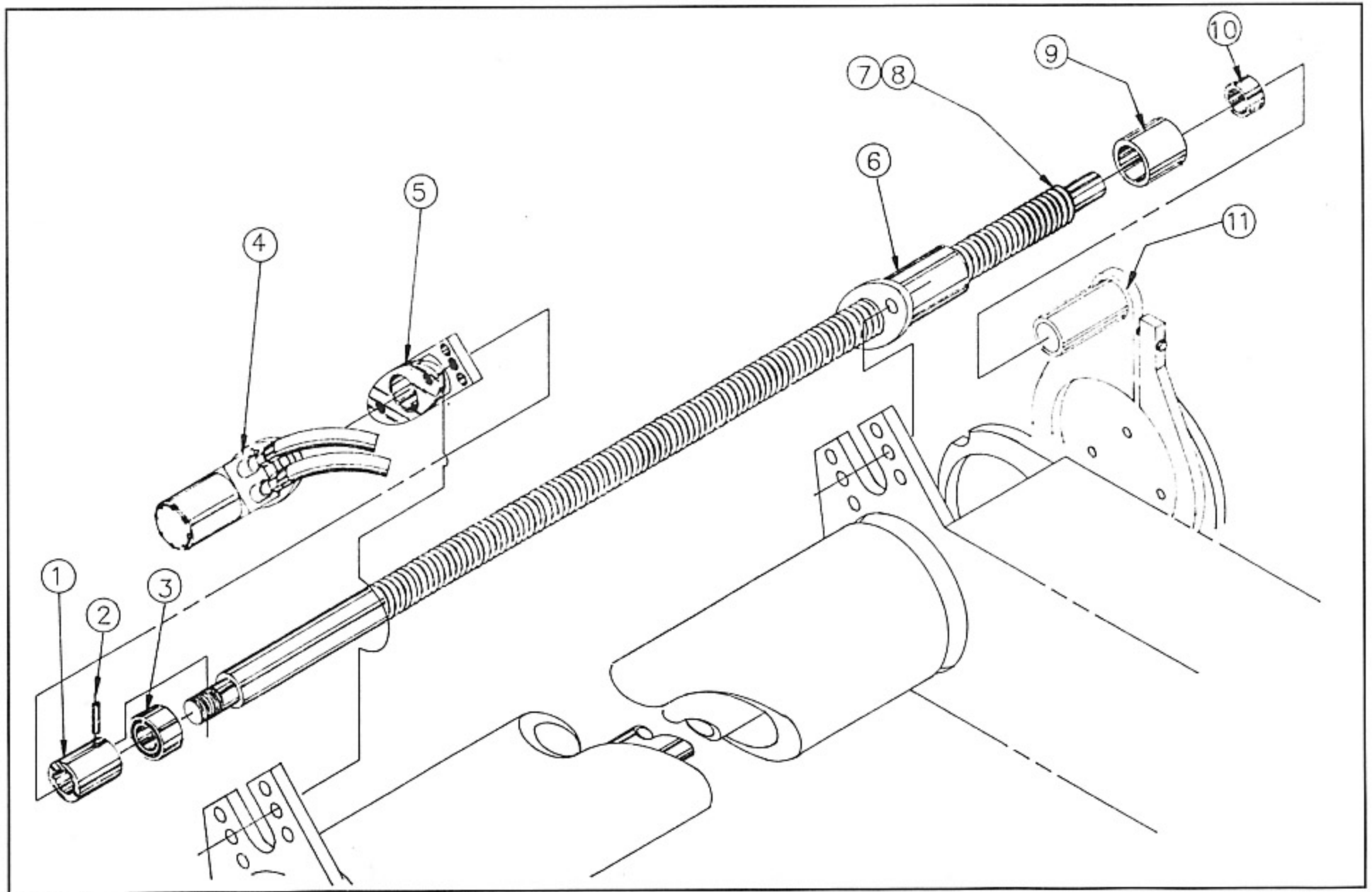
Item #	Part # and Description	Quantity
1	CGS-8027 Shaft Bearing (Standard)	4
	CGS-8027B Shaft Bearing (Bronze)	4
2	CGS-8029 Lift Arm Housing	2
3	CGS-8683 Inside Shaft	1
4	CGS 9820 Hose Pan for 96" Roll Stand	1
	CGS-9961 Hose Pan for 78" Roll Stand	1
	CGS-9962 Hose Pan for 87" Roll Stand	1
5	CGS-8682 Main Shaft	1
6	CGS-8173 Outboard Screw Support	1
7	CGS-9821 Hose Pan Support Plate	1
8	CGS-8033 Lift Arm Key	2
9	CGS-9834 Hydraulic Line Protector	1



Mill Roll Stand - Screw Shaft Assembly

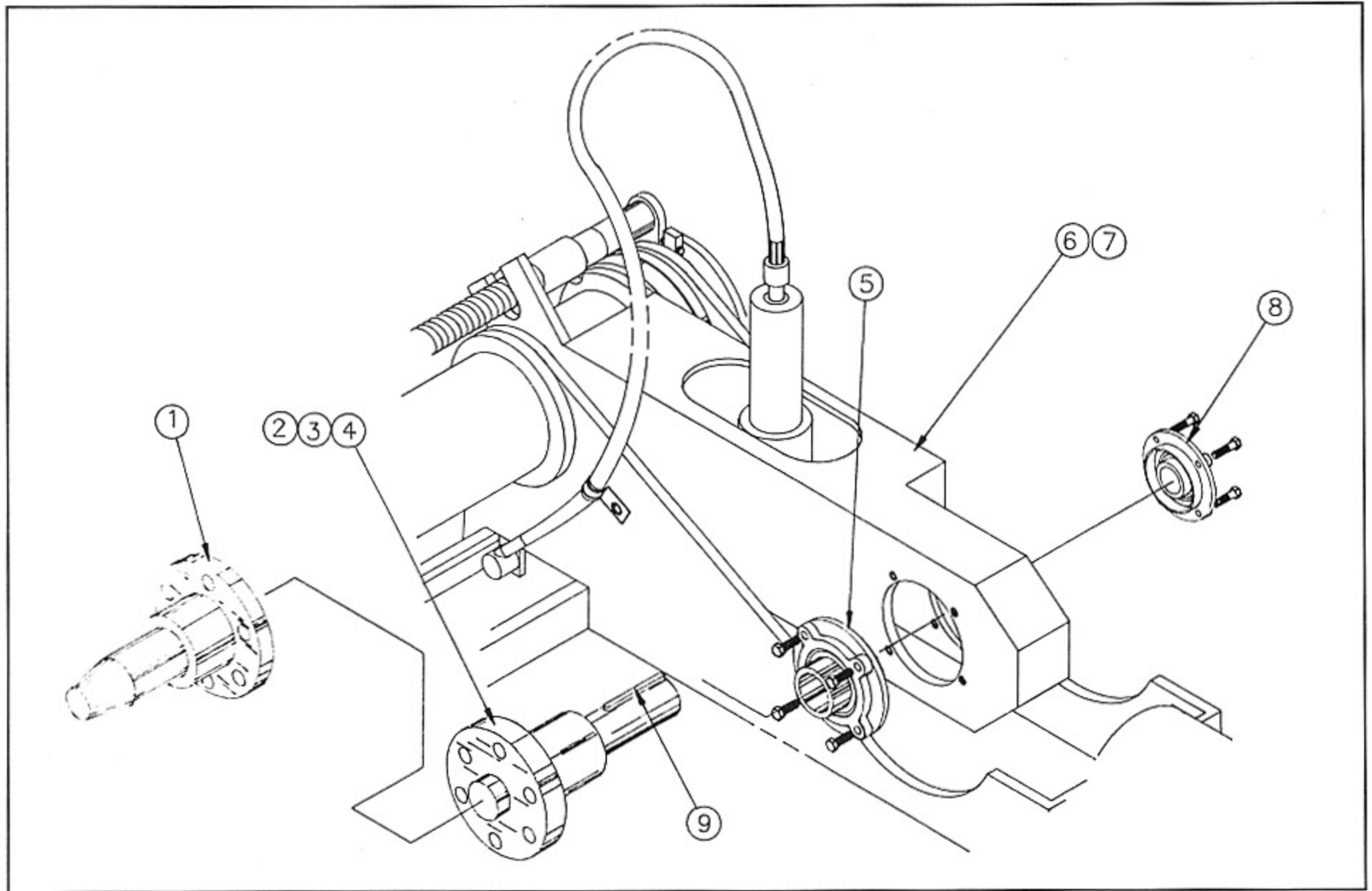
Item #	Part # and Description	Quantity
1	CGS-8177 Collar	1
2	3/8 Roll Pin	1
3	100-20828-0 Bearing	1
4	CGS-9815 Hydraulic Motor	1
5	CGS-8487 Housing	1
6	CGS-8066 Nut (Without Threaded Flange)	1
	CGS-8066T Nut (With Threaded Flange)	
7	CGS-8170 Screw Assembly (Made of Item # 1, 2, 3, 8 & 9)	1
8	CGS-8176 Screw Shaft	1
9	CGS-8482 End Protector	1
10	1011-52349-0 Bronze Bushing	1
11	CGS-8173 Screw Support	1

NOTE: CGS CAN RE-BABBAT YOUR EXISTING NUT (ITEM #6)



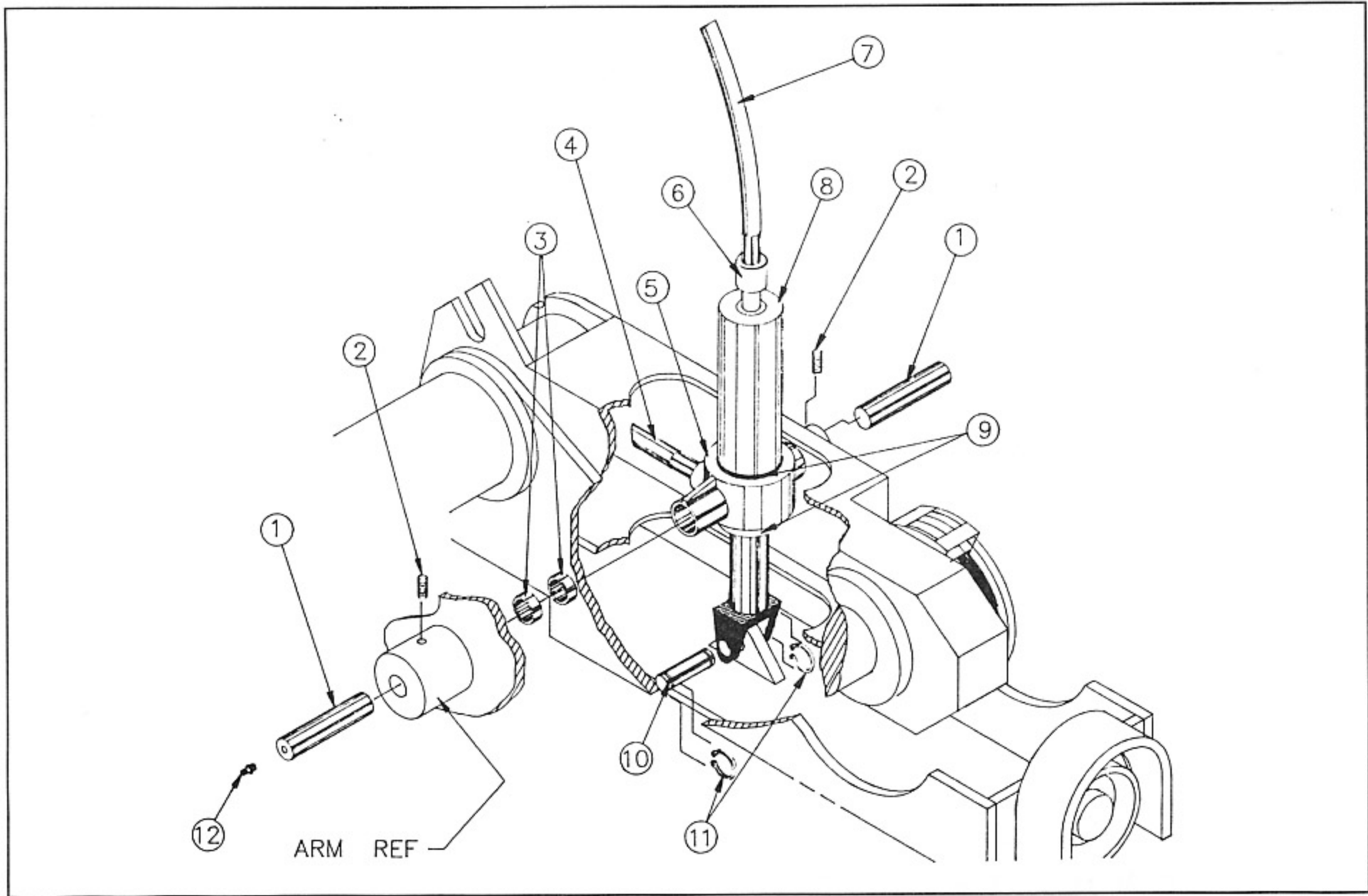
Mill Roll Stand - Arm Assembly

Item #	Part # and Description	Quantity
1	MSD-0345 Chuck	2
2	CGS-8484 Roll Arbor for Drum Brake	2
3	CGS-8484M Roll Arbor for Stands <u>ORIGINALLY</u> equipped with Tidland Air Brakes	2
4	CGS-8484S Roll Arbor for Roll Stands Converted by CGS with Tidland Air Brakes	2
5	1013-14809-0 Arbor Bearing	2
6	CGS-9790 Stationary Arm R.H. Machine Mobile Arm L.H. Machine	1
7	CGS-9791 Mobile Arm R.H. Machine	1
8	1013-13205 Arbor Bearing	1
9	1/2" Square Key x 3" Long	2



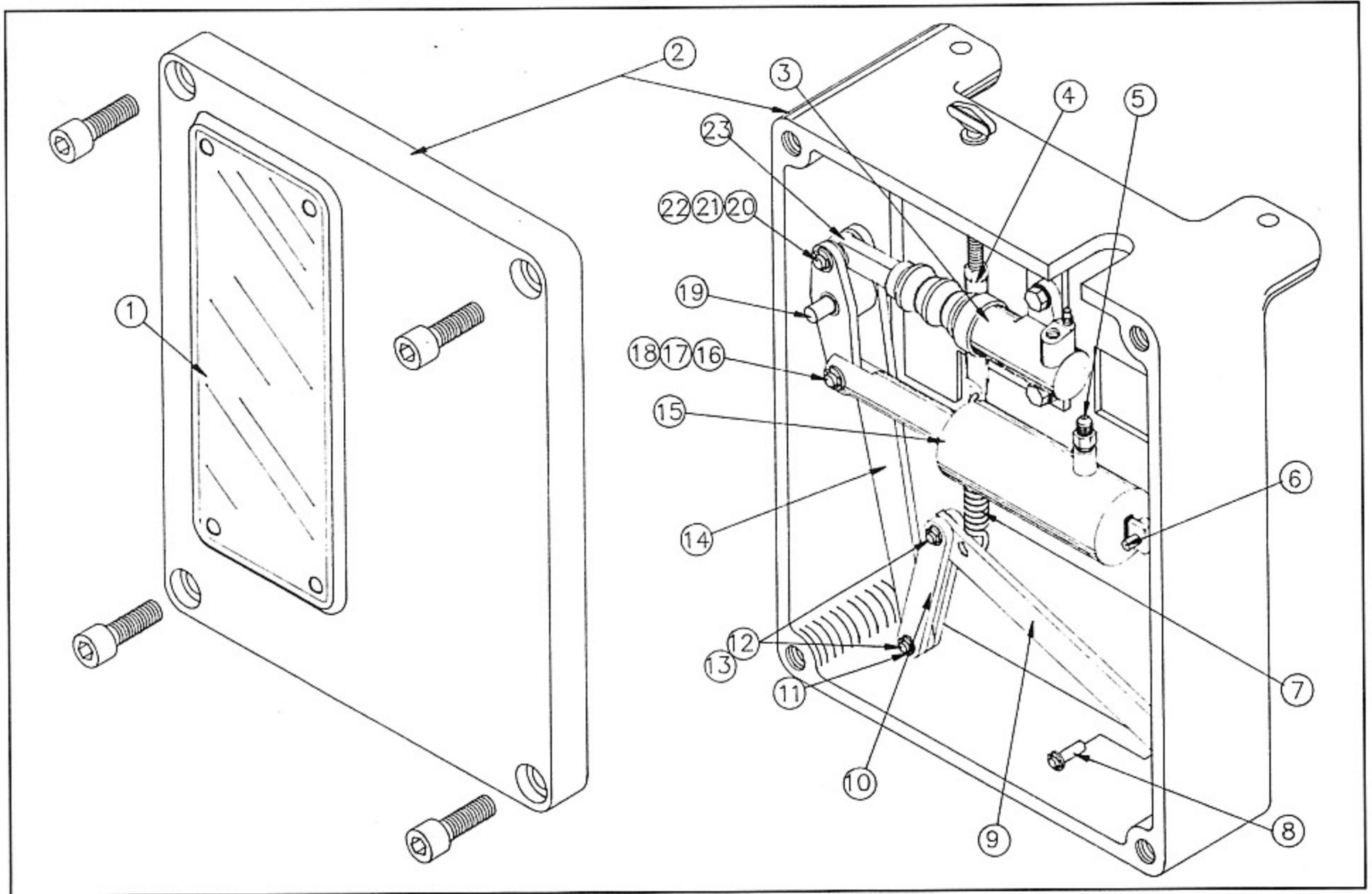
Mill Roll Stand - Lift Cylinder Assembly

Item #	Part # and Description	Quantity
1	CGS-8483 Trunion Pin	1
2	3/8-16 x 3/4 Set Screw	2
3	1006-11612-0 Trunion Bearing	4
4	Return Hose	1
5	CGS-8481 Cylinder Trunion	1
6	CGS-9909 Velocity Fuse	1
7	Pressure Hose	1
8	CGS-9869 Lift Cylinder	1
9	1237-38700-0 Retaining Ring	2
10	CGS-8035 Clevis Pin	1
11	1237-10000-0 Retaining Ring	2
12	1/8 NPT Grease Fitting	2



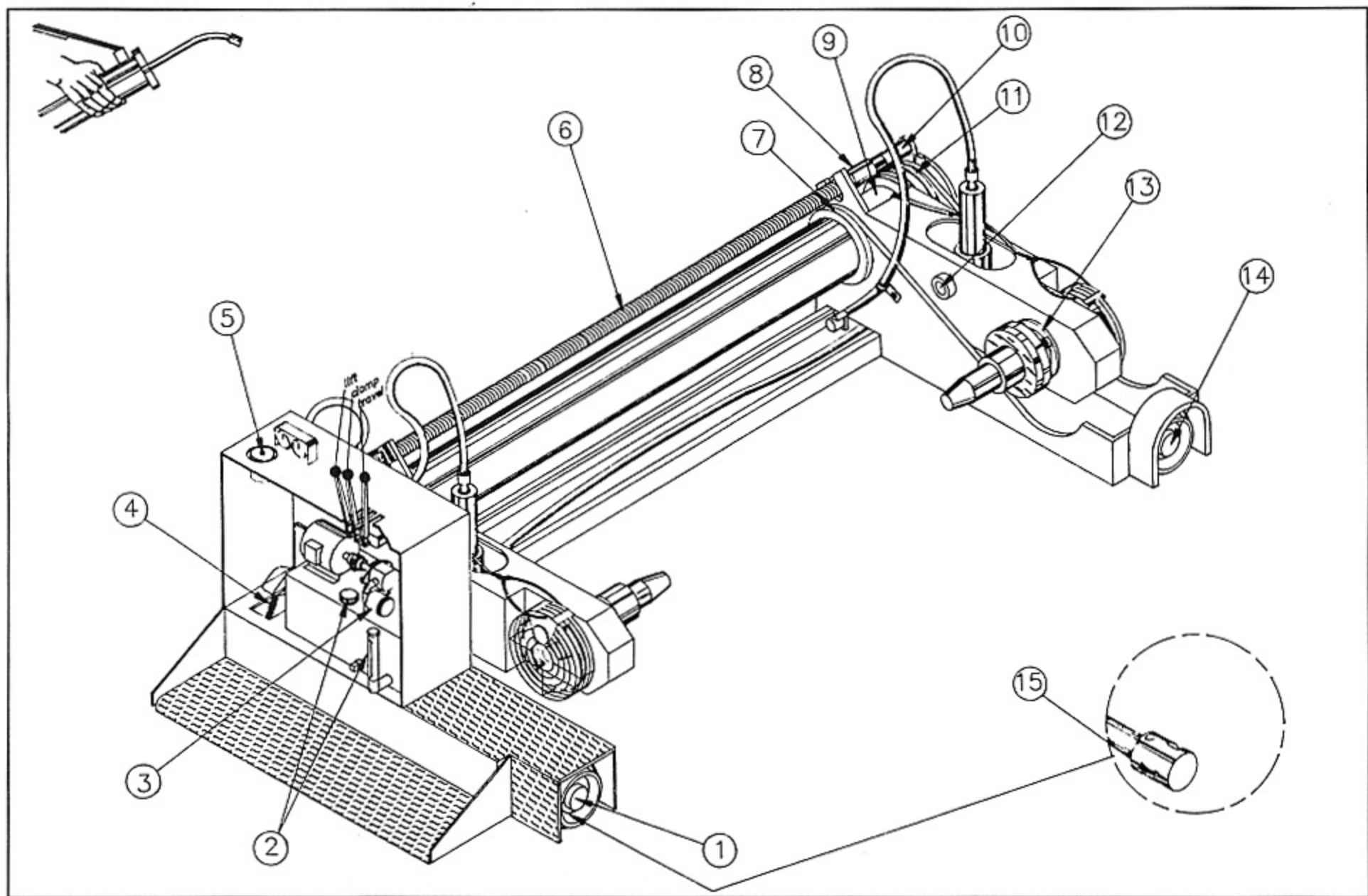
Mill Roll Stand - Web Tension Control Box

Item #	Part # and Description	Quantity
1	CGS-9882 Cover Window	1
2	CGS-9883 Housing	1
3	CGS-9884 Brake Cylinder	1
4	CGS-9885 Tension Adjusting Screw Assembly	1
5	Fitting	1
6	CGS-9886 Cylinder Pivot Pin	1
7	CGS-9887 Spring	1
8	CGS-9888 Spring Arm Pivot Pin	1
9	CGS-9889 Spring Arm	1
10	CGS-9890 Spring Arm Clevis	2
11	X5133-31 Retaining Ring	5
12	CGS-9891 Spring Arm Clevis Pin	2
13	1006-10550-0 Bearing	2
14	CGS-9892 Control Arm	1
15	CGS-9893 Sensing Cylinder	1
16	CGS-9894 Clevis Pin	1
17	1006-10780-0 Bearing	3
18	X5133-43 Retaining Ring	2
19	CGS-9895 Cylinder Rod Pin	1
20	CGS-9896 Brake Rod Pivot Pin	1
21	1006-10870 Bearing	1
22	5133-50 Retaining Ring	2
23	CGS-9897 Brake Rod	1
24	CGS-9898 Complete Assembly	1



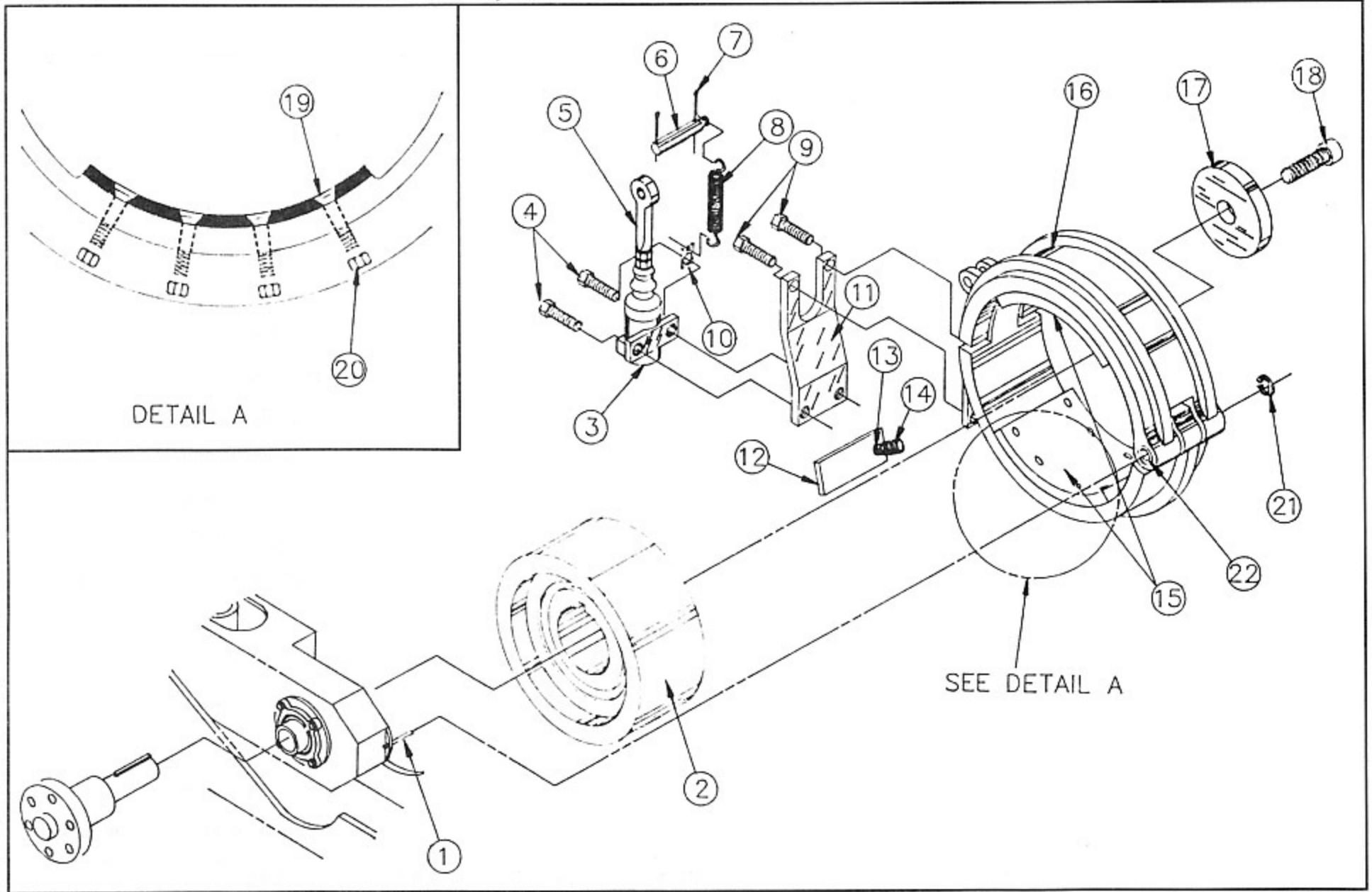
Mill Roll Stand - Lubrication Points

Item #	Part # and Description
1	Moly Grease
2	Chevron Utility Oil 22
3	Filter (See Page 3)
4	Chain Lube
5	Heavy Duty Brake Fluid
6	Moly Grease
7	Moly Grease
8	Moly Grease
9	Moly Grease
10	Moly Grease
11	Moly Grease
12	Moly Grease
13	Moly Grease
14	Moly Grease
15	30 W Oil



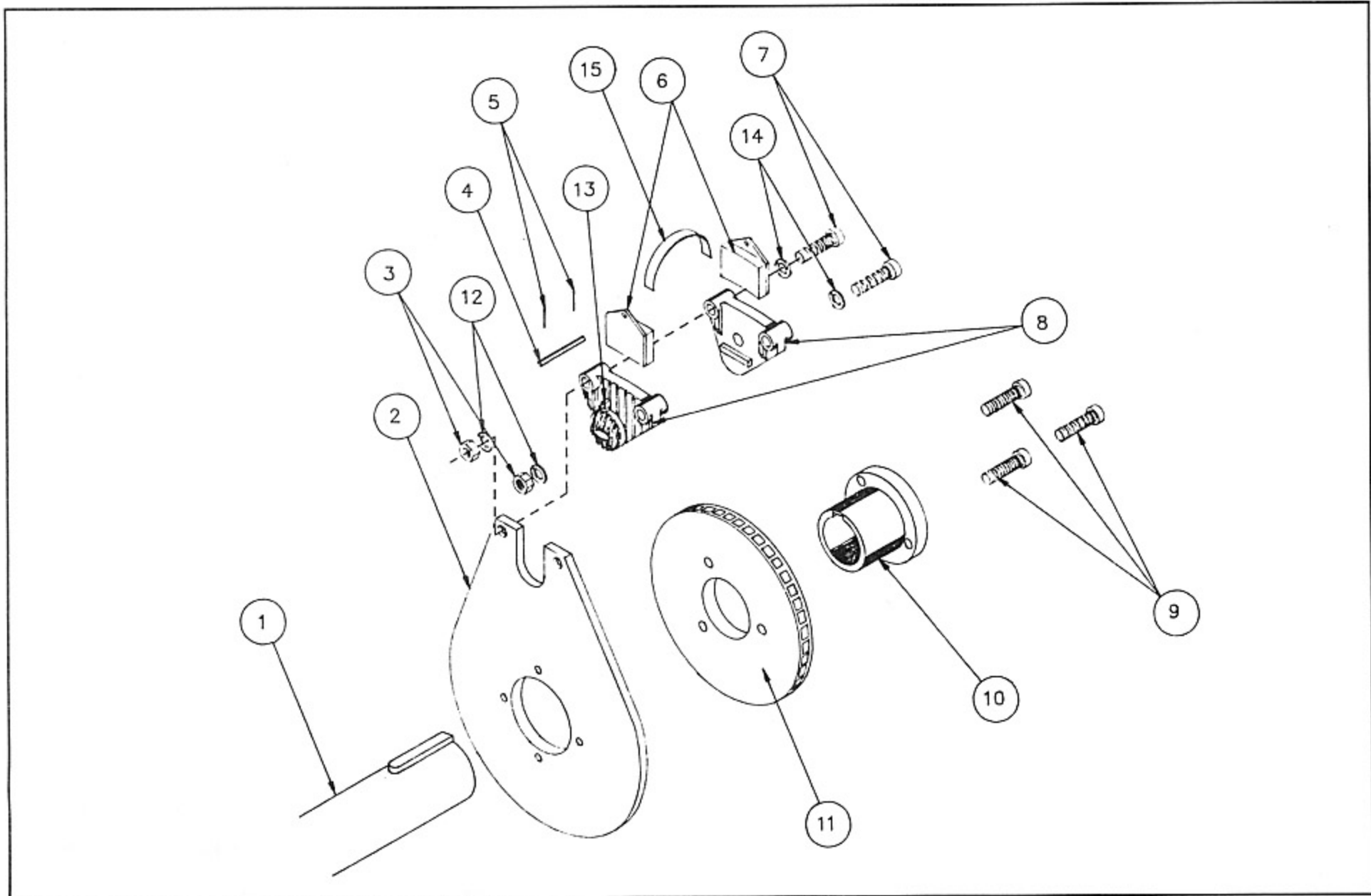
Mill Roll Stand - Standard Drum Brake Assembly

Item #	Part # and Description	Quantity
1	CGS-9899 Anchor Pin	1
2	CGS-8501 Brake Wheel	1
3	CGS-9884 Brake Cylinder	1
4	7/16 x 1-1/4 Hex Bolt	2
5	CGS-9900 Brake Cylinder Rod End	1
6	CGS-9901 Pin Brake Rod End	1
7	1/8 Cotter Pin	2
8	CGS-9902 Release Spring	1
9	3/8 x 1-1/2 Hex Bolt	2
10	CGS-9903 Spring Anchor	1
11	CGS-9904 Cylinder Bracket	1
12	Steel Tab	1
13	3/8 x 2-1/2 SQ HD Set Screw	1
14	CGS-9905 Spring	1
15	930-02074-00 Brake Lining	2
16	CGS-9906 Brake Yoke	1
17	CGS-9907 Cap	1
18	1/2-13 x 2 Flat HD Screw	1
19	1/4-20 x 1 Flat HD Brass Screw	16
20	1/4-20 Nut and Washer	16
21	Retaining Ring	1
22	CGS-9908 Pivot Sleeve	1



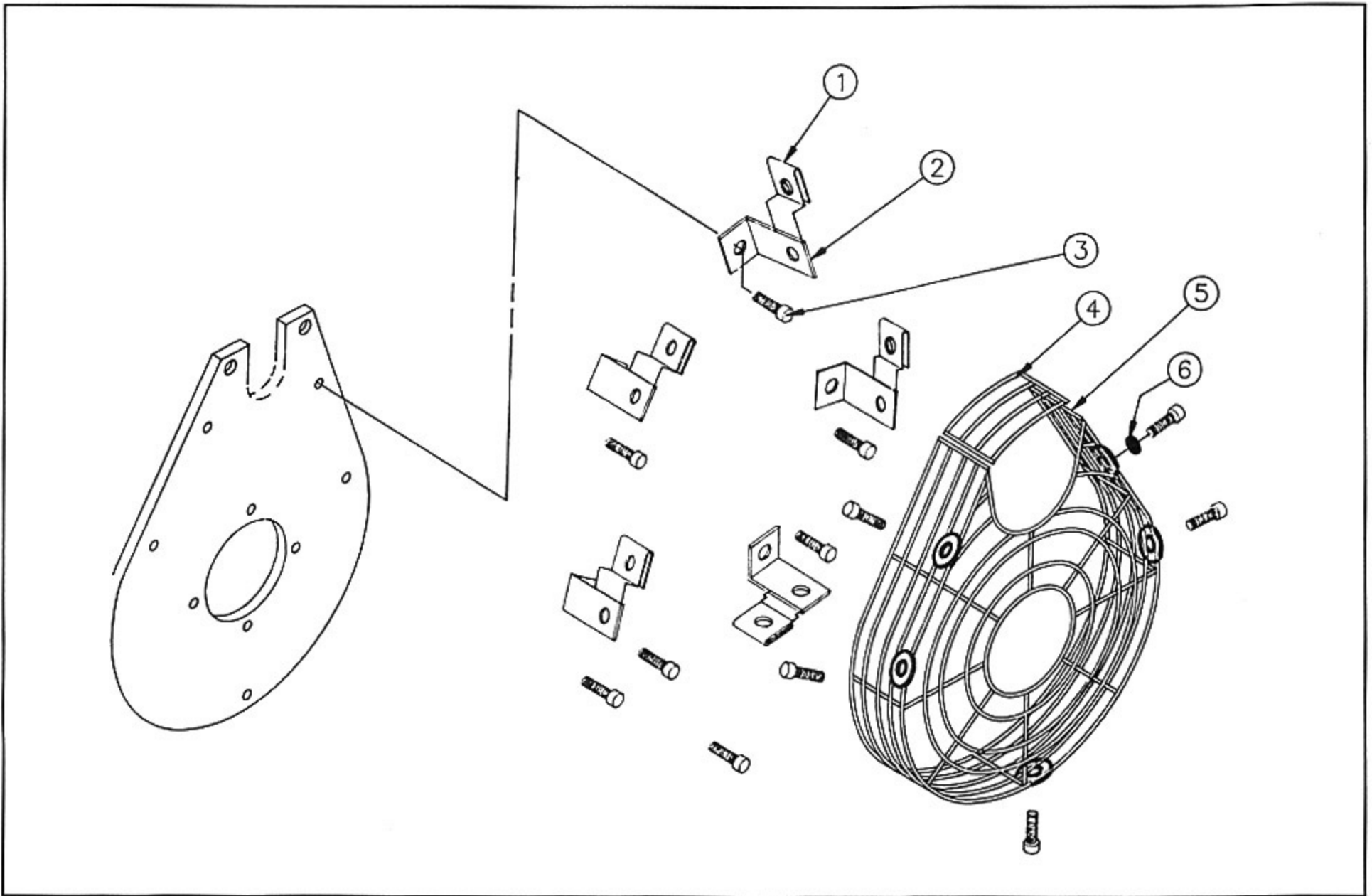
Mill Roll Stand - Air Brakes (Tidland)

Item #	Part # and Description	Quantity
1	Arbor (REF) (See Page 12 Item # 8)	
2	CGS-9795 Brake Plate	2
3	Mounting Nut	4
4	CGS-9830 Pad Placement Pin	2
5	Hitch Pin	4
6	CGS-9831 Brake Pad	4
7	Mounting Bolts	4
8	Brake Caliper	2
9	Bushing Bolts	6
10	1045-86200-0 Taperlock Bushing	2
11	CGS-9832 Brake Rotor	2
12	Flat Washer	4
13	Elbow-Air Inlet	4
14	Flat Washer	4
15	CGS-9955 Brake Pad Expansion Spring	1



Mill Roll Stand - Guard for Air Brakes

Item #	Part # and Description	Quantity
1	5/16-18 "U" Bolt	5
2	CGS-9952 Angle Bracket	5
3	5/16-18 x 3/4 Hex HD Screw	10
4	CGS-9953 Top Guard Section	1
5	CGS-9954 Brake Guard Cage	1
6	5/16 Star Washer	5
7	CGS-9833 Complete Guard Assembly	1



Mill Roll Stand - Extension Conversion

Item #	Part # and Description	Quantity
1	* CGS-8170 Screw Shaft Assembly 87"	1
	* CGS-8170B Screw Shaft Assembly 96"	1
2	CGS-8033B Extended Key	1
3	CGS-9910 Inner Shaft Extension	1
4	1/2-13 x 2 Socket HD Screw	4
5	CGS-9911 Main Shaft Extension	1
6	Existing Inner Shaft Ref.	N/A

* STRETCH 87 Converts 78" Machine to 87"

* STRETCH 96 Converts 87" Machine to 96"

